

USA MOBILITY

CABLE CONNECTION AND SOFTWARE DRIVER INSTALLATION INSTRUCTIONS

For

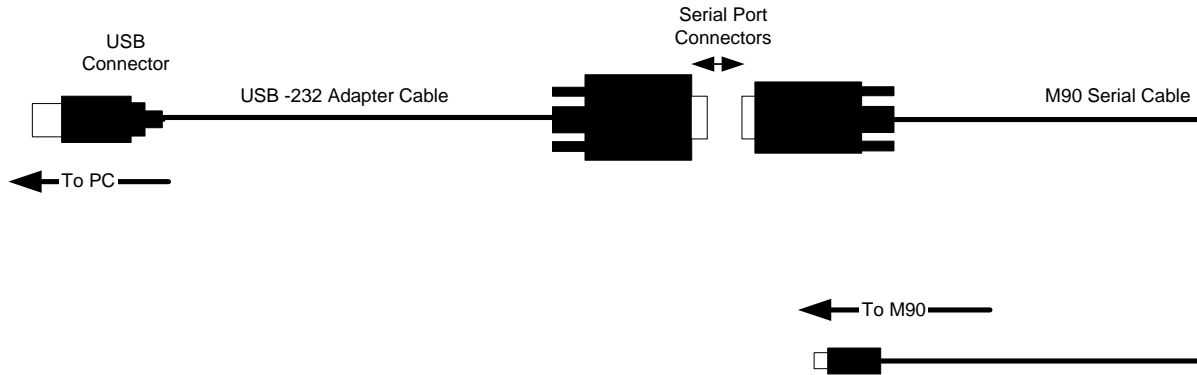
Unication M90 Device USB To RS232 Adapter

TABLE OF CONTENTS

SECTION 1: ADAPTER CABLE CONNECTION INSTRUCTIONS.....	2
SECTION 2: ADAPTER SOFTWARE DRIVER INSTALL INSTRUCTIONS	3
WINDOWS XP	3
WINDOWS 2000	6
WINDOWS 98SE	9

SECTION 1: Adapter Cable Connection Instructions

The M90 device uses a serial connection for communicating with a PC for its' backup and restore software. If your PC only has USB ports, a USB to RS232 serial adapter can be used. The adapter will connect to the PC and the supplied M90 serial cable as shown in the drawing below.



SECTION 2: Adapter Software Driver Install Instructions

To install the software drivers for the USB-To-RS232 Adapter perform the following Steps

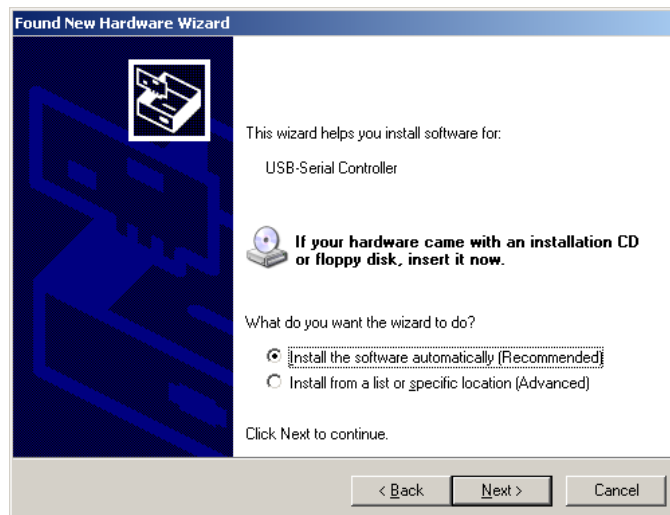
1. Power on the computer. For Windows XP and Windows 2000 you will need to logon with administrator rights.
2. Plug the USB-To-RS232 Adapter into an available USB port on the computer.
3. Insert the mini CD that came packaged with the USB-To-RS232 Adapter into the CD drive. This CD contains the drivers for the USB-To-RS232 adapter.
4. Follow the New Hardware Wizard to install the software driver, which is located on the mini CD included with the USB-To-RS232 adapter. Step by step instructions are given for Windows XP, Windows 2000, and Windows 98SE.

Windows XP

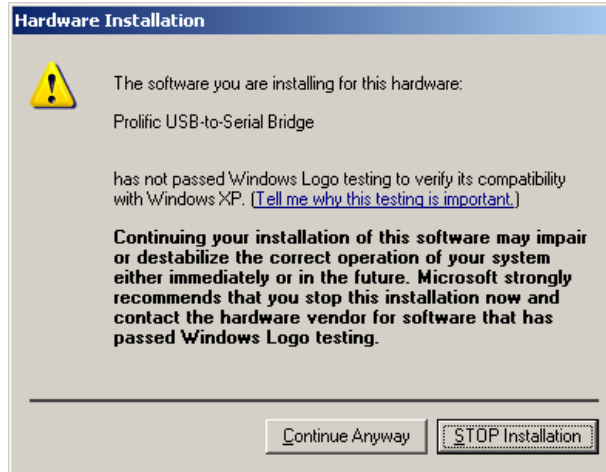
1. Select "No, not this time", and press Next to continue using the New Hardware Wizard.



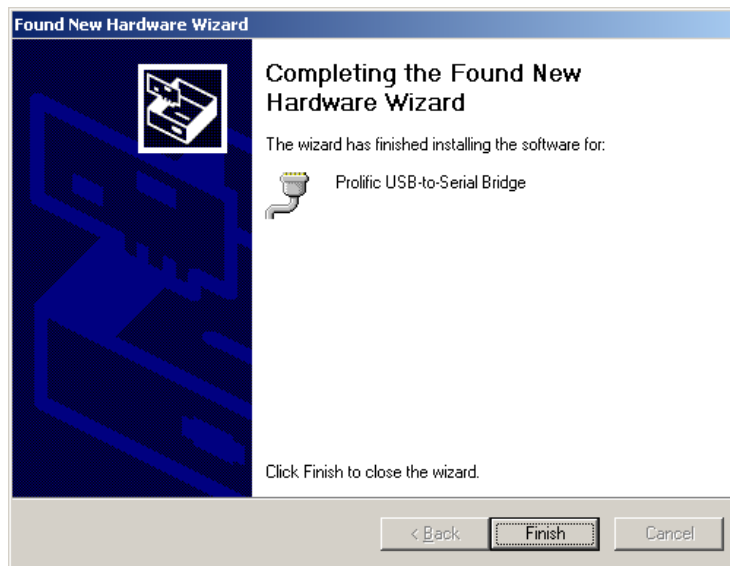
2. Select "Install the software automatically", and press Next.



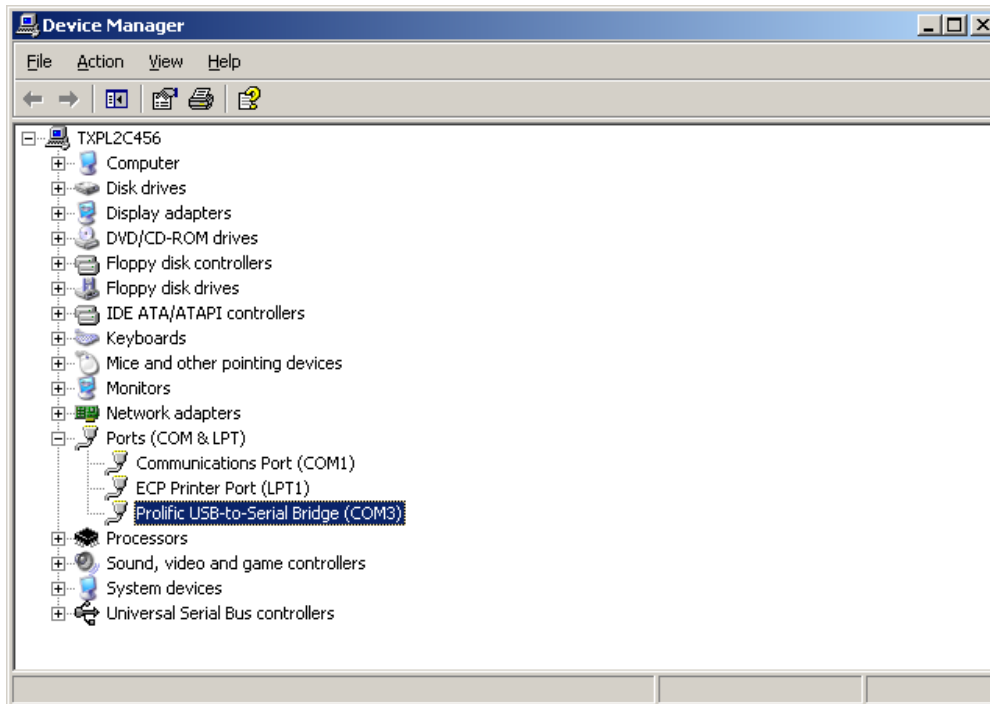
3. If the following window is displayed you should select Continue Anyway to finish the driver installation.



4. After the installation is completed, the following window will be displayed. Press Finished to exit the New Hardware Wizard.

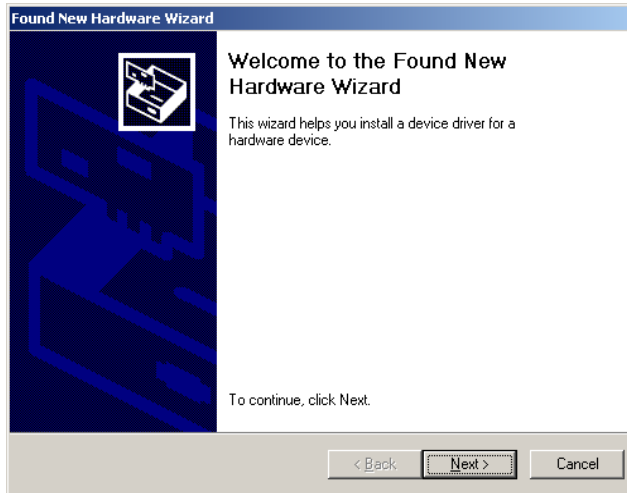


5. To determine the COM port the device was installed on, select Start->Settings->Control Panel from the Start Menu. Then select double click System. Click on the Hardware Tab and select Device Manager, Click on Ports (COM & LPT). Look for "Prolific USB-to-Serial Bridge". The value in parentheses will be the Com port. This information will be needed to select the correct port in the M90 Software.



Windows 2000

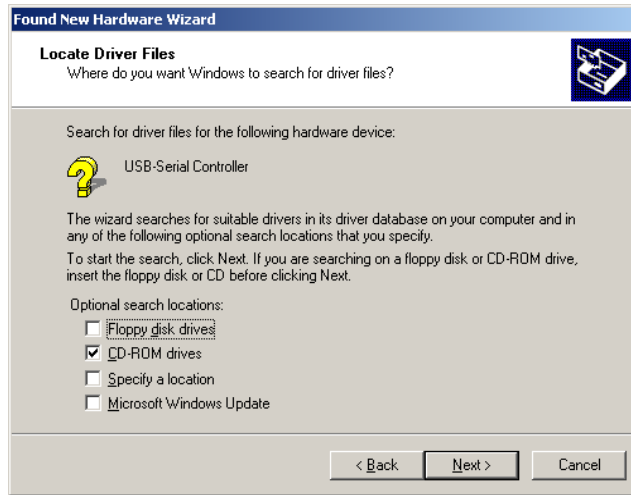
1. Press Next to continue using the New Hardware Wizard.



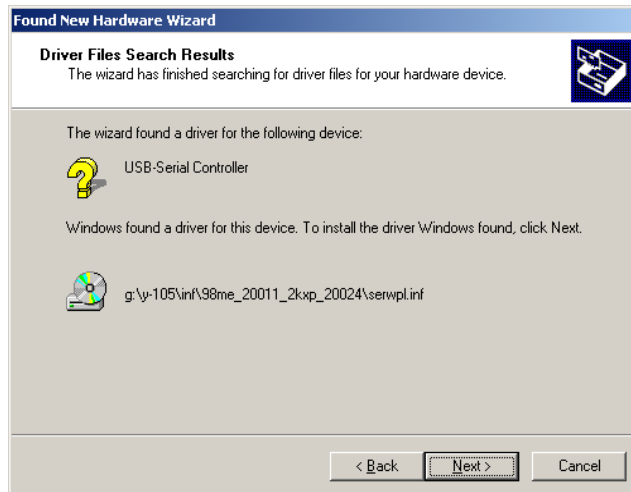
2. Select "Search for a suitable driver for my device", and press Next.



3. Select CD-ROM drives and press Next.



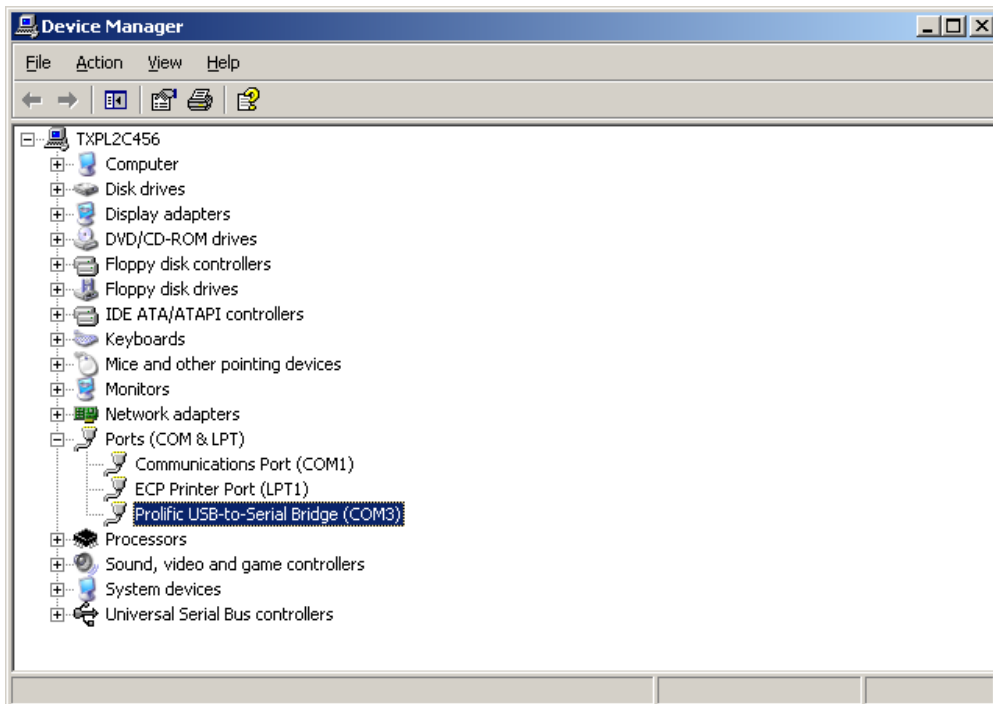
4. After searching through the CD, a screen similar to the following will appear. Press Next to continue.



- 5. After the installation is completed, the following window will be displayed. Press Finished to exit the New Hardware Wizard.



- 6. To determine the COM port the device was installed on, select Start->Settings->Control Panel from the Start Menu. Then select double click System. Click on the Hardware Tab and select Device Manager, Click on Ports (COM & LPT). Look for "Prolific USB-to-Serial Bridge". The value in parentheses will be the Com port. This information will be needed to select the correct port in the M90 Software.



Windows 98SE

1. Press Next to continue using the New Hardware Wizard.



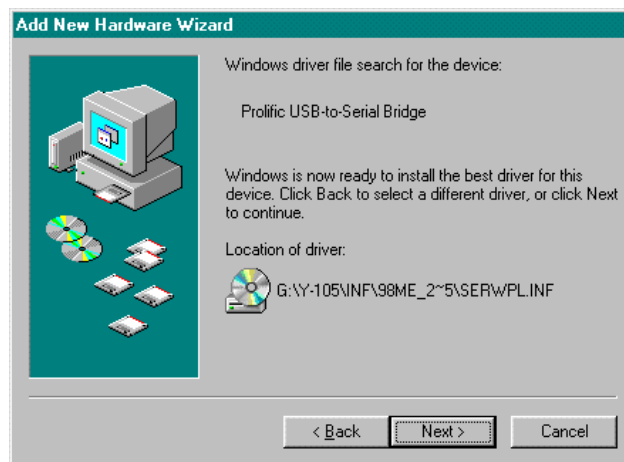
2. Select "Search for the best driver for your device", and press Next.



3. Select CD-ROM drive and press Next.



4. After searching through the CD, a screen similar to the following will appear. Press Next to continue.



5. After the installation is completed, the following window will be displayed. Press Finished to exit the New Hardware Wizard.



6. To determine the COM port the device was installed on, select Start->Settings->Control Panel from the Start Menu. Then double click System and click on the Device Manager Tab, Click on Ports (COM & LPT). Look for "USB to Serial Port". The value in parentheses will be the Com port. This information will be needed to select the correct port in the M90 Software.

